

# TOP 10 glamping experiences

LOOKING TO EXPERIENCE THE SIGHTS, SOUNDS AND SMELLS OF THE GREAT OUTDOORS WITHOUT SKIMPING ON LUXURY?

WORDS: Karen Bleakley

If you want to be at one with the epic scenery in Australia and New Zealand, but you aren't keen on the idea of roughing it under canvas, we have the answer. Here's our pick of the some of the best luxury glamping experiences... >>

Main image: Safari tents at Taronga Zoo overlook the iconic Sydney Harbour





Eco-tents ooze rustic charm; and (right) dinner on the deck



## 1 SAL SALIS

Exmouth, Western Australia

I've travelled far and wide in Australia, but my favourite destination will always be Exmouth, Western Australia. Few places can compare with the powder-white sand, the insanely turquoise water or the copper landscape in this unique pocket of WA.

This isolated resort is tucked into the dunes by the Ningaloo Reef in Cape National Park. With eco-tents oozing rustic charm, and an opulent décor of earthy, natural textures, the accommodation blends into the land and forms part of the breath-taking scenery.

This place has recently been voted number four on Lonely Planet's 'best places to stay in the world', and it's not difficult to see why.

Stroll to the dazzling white beach, swim, snorkel, take guided walks and, if you visit between April and July, you can enjoy the swim of a lifetime as you take a dip with the migrating whale sharks.

If your idea of heaven is living in pure luxury surrounded by coastal scenery so intensely beautiful that your mind almost doesn't believe it is real, then you need to visit Sal Salis. Prices start from A\$740 (£452) per person per night.

■ [www.salsalis.com.au](http://www.salsalis.com.au)

## IKARA SAFARI CAMP

Wilpena Pound Resort, Flinders Ranges National Park, South Australia

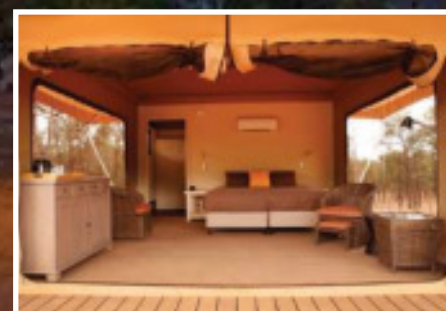
# 3

Ikara means 'meeting place' in the local Adnyamathanha language, and Wilpena Pound was where the traditional owners gathered for family meetings going back tens of thousands of years. Now you can experience the area's rich heritage for yourself with a range of tent sizes to suit couples or families.

Ikara offers 15 secluded safari tents with incredible views of the Flinders Ranges National Park. With luxurious king-sized beds, private decks, air conditioning and fire pits, you can cosy-up and gaze at the stars all year round.

With Aboriginal cultural tours, four-wheel drive tours and scenic flights, you can enjoy exploring the scenery and the history of the land by day and unwind on your deck by the fire as the sun goes down. Prices start from A\$320 (£195) per night per tent.

■ [www.ikarasafaricamp.com.au](http://www.ikarasafaricamp.com.au)



The camp overlooks the Flinders Ranges and (left) the interior of a safari tent



Zoofari offers 15 African-style tented lodges overlooking the African Savannah at Taronga Western Plains Zoo. Choose between Animal View (sleeps four) where you can watch the giraffe, ostrich and eland roam, or Bushland View (sleeps six) where you get to feel as though you are waking in the African bush. With king-sized beds, mini bars and air conditioning, this is the ultimate way to camp. And when you're ready to re-join civilisation, you can pop to the restaurant, bar and saltwater swimming pool.

Your stay includes an exciting itinerary, which may include wine tasting, an African banquet dinner, a twilight safari which gives you a behind-the-scenes view of the park, and a morning safari.

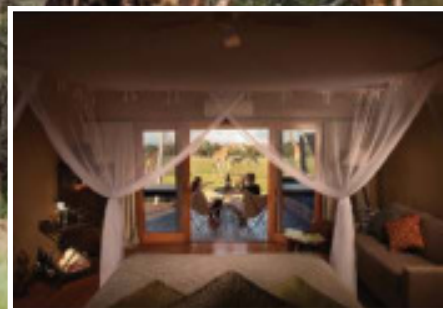
Prices start from A\$329 (£201) per person twin share (Bushland View) and A\$369 (£225) per person twin share (Animal View).

If you want to swap views of the African Savannah for views of Sydney Harbour while still enjoying close proximity to the animals visit its sister property, Taronga Zoo Sydney. Its 'Roar and Snore' package starts from A\$302 (£184) per night.

■ [www.taronga.org.au](http://www.taronga.org.au)

## 2 ZOOFARI LODGE

Dubbo, New South Wales



Animal View lodges overlook an African Savannah; and (left) safari-style interiors

## pebble point

Great Ocean Road, Victoria

# 4

Pebble Point offers an exclusive bush retreat for anyone planning to visit the 12 Apostles and the Great Ocean Road. Nestled behind the cliff tops and the incredible iconic rock formations, these six spacious, luxury tents can be found at the end of the Great Ocean Walk in the intimate coastal village of Princetown.

When you've finished exploring the walking tracks and the national parks, indulge in the local gourmet trails, tree top walks, try a spot of surfing and, if you've timed your visit right, you may even be able to spot some migrating southern right whales.

At the end of a busy day, you can relax on your private deck, take in the fresh salty air and listen to the crash of the ocean waves.

Situated within metres of three national parks, this is the perfect location to explore the great outdoors and take in the world-class coastal scenery while immersing yourself in nature and wildlife. Prices start from A\$145 (£88) per couple per night.

■ [www.pebblepoint.com.au](http://www.pebblepoint.com.au)

>>



A luxuriously-fitted tent at Pebble Point; and (left) coastal views from the private deck



# 5 NIGHTFALL

Lamington National Park,  
Queensland

Unwind in this Lost World paradise under the woodland canopy of Lamington National Park. These hand-made tents allow you to unwind in secluded luxury, away from formed tracks.

This is the ultimate place for star-gazing by the camp fire, relaxing in hammocks to the chorus of the rainforest and pampering your mind, body and soul by indulging in a massage by the creek.

Nightfall was created to stimulate your senses and awaken your imagination with rotating in-tent fireplaces, vintage baths and rain-head showers.

Lamington National Park offers plenty of activities to keep you busy when you've finished relaxing, whether you want to do a tree top walk, visit a vineyards or explore the glow worm caves.

Price from A\$795 (£485) for an all-inclusive experience that includes fire-cooked organic cuisine.

■ [www.nightfall.com.au](http://www.nightfall.com.au)



Bringing the outdoors in at Nightfall; and (inset, above) the interior of a camp tent

# WINGTONS

Clarence Point, Tasmania

Tents located by the water's edge; and (below) inside a safari tent



Wingtons exudes old-fashioned glamour, with its majestic golden safari tents, sumptuous Egyptian cotton linen on queen-sized beds and vintage décor. Nestled beside by the water's edge, the bell tents are the perfect base to enjoy the Tasmania wilderness.

As the sun goes down, light your campfire and sip a chilled local wine as you throw some dinner on your private barbecue while gazing at the stars. Then wake the next morning to the relaxing sound of the Tamar waters lapping against the shore just metres from your tent.

With wine tours, hikes and white sandy beaches to explore, plus sites such as the Tamar River Conservation Wetlands and the Beaconsfield Goldmine all an easy journey away, your home in the seclusion of the Tamar Valley is a great base for your Tasmanian adventure. Prices start from A\$200 (£122) per tent per night.

■ [www.wingtons.com](http://www.wingtons.com)

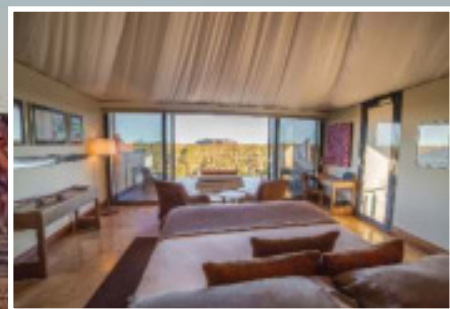
# 6 LONGITUDE 131°

Uluru, Northern Territory

If you want to make your stay in the Red Centre spectacular, then look no further than Longitude 131°. This intimate resort offers 15 tents elevated atop the rust-red dunes of the desert, with unrivalled views of Uluru. Discreetly nestled into the landscape of Uluru-Kata Tjuta National Park, the architect-designed canopy accommodation offers balconies, day beds, ecosmart fireplaces and indigenous artwork to make you feel at home.

During your stay, if you can tear yourself away from the view, you can participate in sunrise expeditions, sunset walks at the base of Uluru and sumptuous desert dinners under the stars. Combine your visit to one of the world's most iconic sights with a stay at Longitude 131° for the ultimate glamping experience. Prices start from A\$1,350 (£824) per person per night.

■ [www.longitude131.com.au](http://www.longitude131.com.au)



Superior views of Uluru from the resort; and (inset, above) inside a spacious tent



# explore life

Mount Gold, Wanaka, South Island

Lakeside views from the Explore Life camp; and (inset, above) inside a tent

Arguably the most idyllic glamping location in New Zealand, Explore Life offers two secluded accommodation options that are separated by gullies and trees.

The 'Mount Gold' option is a large tent for couples set upon a hill where you're rewarded with 180 degree views over the breathtakingly beautiful lake from Treble Cone to Mount Gold. With cosy décor, textured fabrics and soft colours, the whole area has a magical feel when the sun goes down and the tent lights up with fairy lights and LED lanterns.

Wilding Pines is for larger groups. This pair of large lotus belle tents come with a unique hammock tree tent that has to be experienced to be believed (it's like sleeping in a well-filled water bed where you can gently bounce in the breeze).

Your itinerary can include mountain biking, hiking and kayaking combined with some chill-out time in Wanaka. Don't forget to spend an evening at Cinema Paradiso – possibly the most comfortable cinema in the world – where you can eat soft home-baked cookies while watching a movie on a sofa.

Prices start from NZ\$350 (£197) per night for Mount Gold and NZ\$630 (£354) per night for up to four people at Wilding Pines.

■ [www.explorelife.co.nz](http://www.explorelife.co.nz)





9

Imagine a unique destination where you can look across a city skyline from under canvas. St. Jerome's The Hotel offers an urban glamping option, where you can snooze on the rooftop overlooking the city while enjoying all-inclusive luxury. With 24-hour reception, a complimentary esky (cool box) of cold drinks in your tent, a gourmet breakfast box and barista-made coffee delivered right to your tent in the morning, plus sundowner cocktails, who needs a five-star hotel?

Outside your tent, the vibrant city of Melbourne awaits, with its National Gallery, Museum, Zoo and Botanic Gardens not to mention its gourmet coffee shops, fine dining and bustling wine bars – you won't be short of things to do during the day or night.

Prices for luxe tents start from A\$420 (£256), and luxe plus tents start from A\$450 (£274).

■ [www.stjeromesthehotel.com.au](http://www.stjeromesthehotel.com.au)

Camping in the heart of Melbourne; and (inset, top left) inside a cosy tent

What better way to get away from it all than on an eco-friendly, private island?

Banubanu Wilderness Retreat is on an island 13 kilometres from Gove on the Gove Peninsula. Stay in absolute beach-front accommodation where you step outside your safari tent onto soft, golden sand. As the day wears on, your deck is an idyllic place to take in the ocean views as the sun goes down.

Banubanu is an eco-friendly retreat that harnesses solar and wind power to ensure it leaves the tiniest of ecological footprints.

You may not want to leave this slice of paradise, but if you do want to venture beyond the hammock, there are opportunities for cultural experiences where the Yolngu community can teach you to fish and weave. You can also take a tour of the island which is largely unoccupied (only the resort staff and a small indigenous community are based there). Then there's fishing, cooking classes, bird watching and hiking...

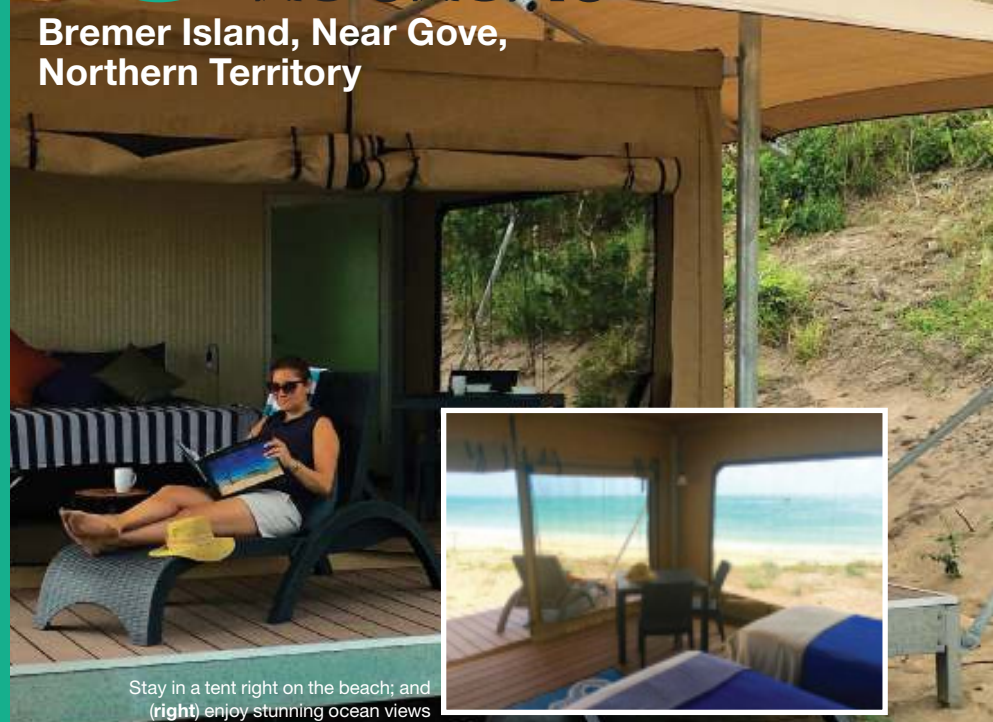
This is the place to get your Robinson Crusoe fix without roughing it one little bit.

Prices start from A\$300 (£183) per person per night in a twin share tent with shared bathroom and A\$450 (£274) per person per night for a beachfront safari tent with en suite.

■ [www.banubanu.com](http://www.banubanu.com)

# 10 BANUBANU WILDERNESS RETREAT

Bremer Island, Near Gove, Northern Territory



Stay in a tent right on the beach; and (right) enjoy stunning ocean views

